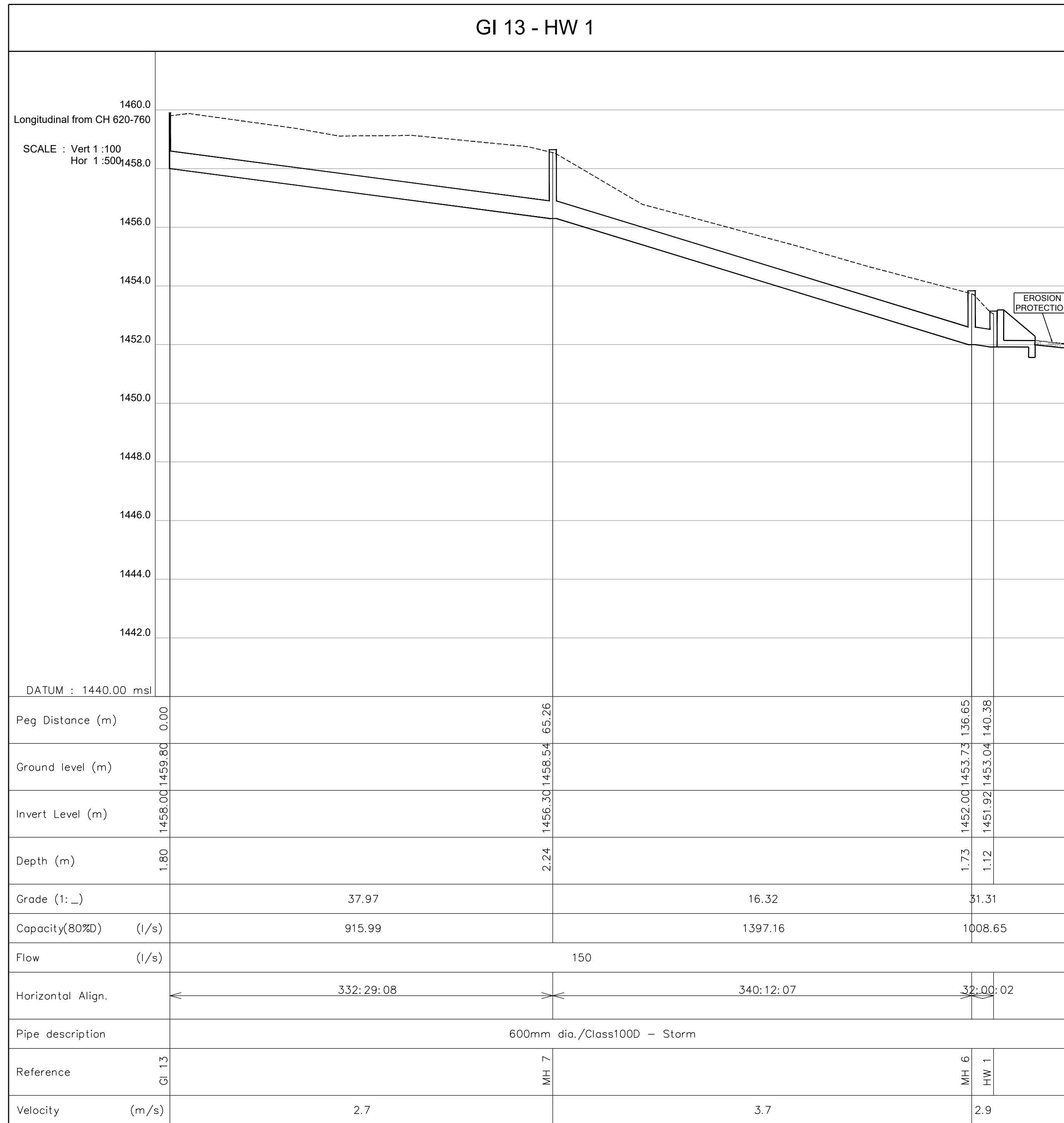


### MH 5 - GI 12

Reference	Horiz.	Slope
MH 5 - GI 12	20.787	20.845

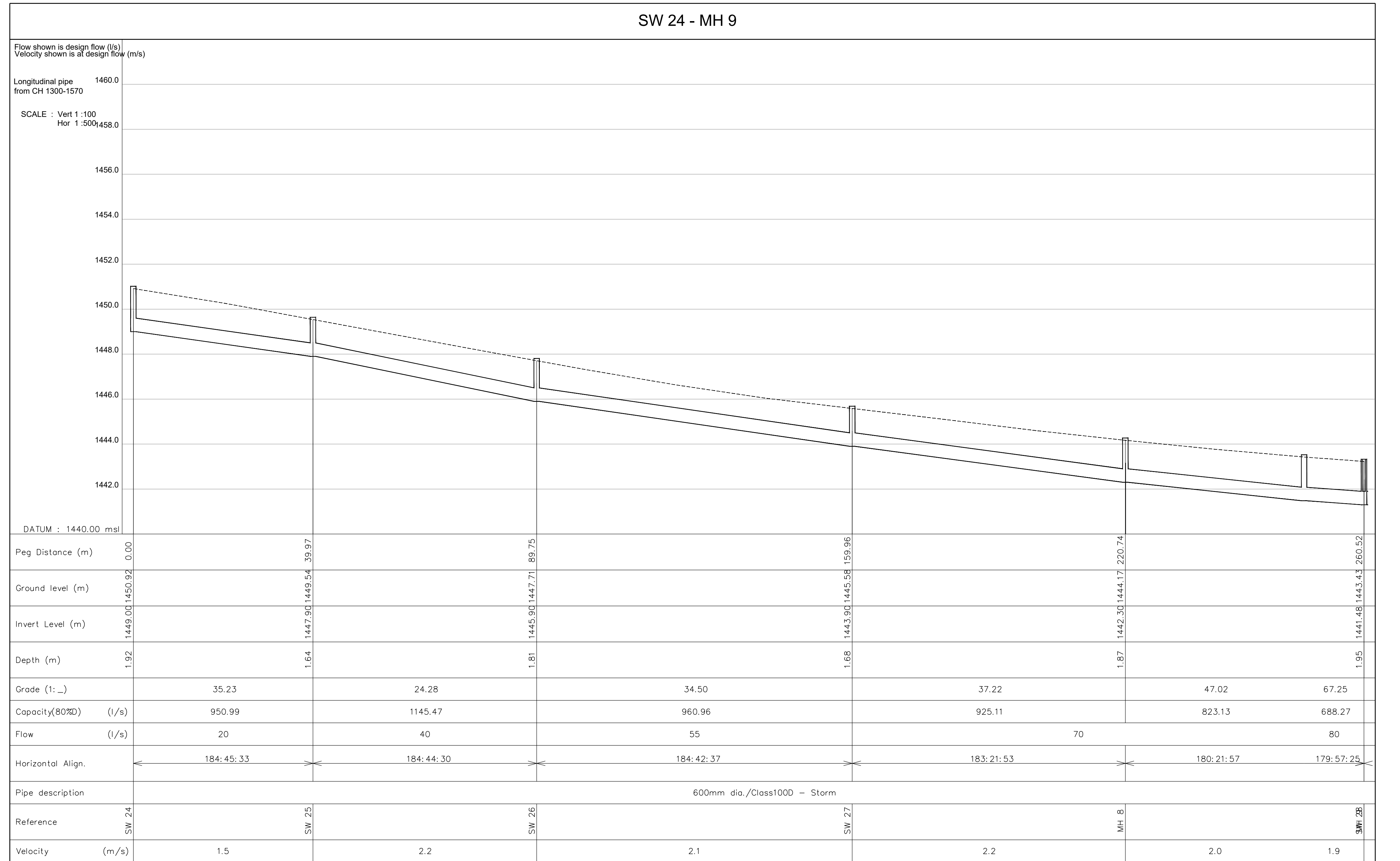
Reference	Y	X	IL in / out	DEPTH in / out
MH 5	88192.532	3287049.714	1442.942	1.993
GI 12	88178.987	3287029.232	1444.500	2.006



### GI 13 - HW 1

Reference	Horiz.	Slope
GI 13 - MH 7	65.257	65.279
MH 7 - MH 6	71.395	71.524
MH 6 - HW 1	3.725	3.726

Reference	Y	X	IL in / out	DEPTH in / out
GI 13	88284.086	3286756.166	1458.000	1.798
MH 7	88233.039	3286814.042	1456.300	2.245
MH 6	88209.757	3286881.217	1452.000	1.734
HW 1	88211.731	3286884.376	1451.920	1.123



### SW 24 - MH 9

Reference	Horiz.	Slope
SW 24 - SW 25	39.968	39.983
SW 25 - SW 26	49.779	49.820
SW 26 - SW 27	70.216	70.245
SW 27 - MH 8	60.778	60.799
MH 8 - SW 28	39.776	39.783
SW 28 - MH 9	13.325	13.326

Reference	Y	X	IL in / out	DEPTH in / out
SW 24	88512.638	3286298.607	1449.000	1.916
SW 25	88509.322	3286258.777	1447.900	1.639
SW 26	88505.201	3286209.168	1445.900	1.808
SW 27	88499.441	3286139.189	1443.900	1.684
MH 8	88495.874	3286078.516	1442.300	1.868
SW 28	88495.620	3286038.742	1441.480	1.945
MH 9	88495.630	3286025.417	1441.300	1.928

FOR FINAL APPROVAL

SYMBOL	DATE	DESCRIPTION	CHECKED	SIGNED
D	OCT 2019	FOR FINAL APPROVAL	KG	
C	AUG 2018	FOR APPROVAL	KG	
B	AUG 2016	FOR APPROVAL	MM	

**AS BUILT**

SUPERVISING ENGINEER \_\_\_\_\_ DATE \_\_\_\_\_

SUPERVISING AUTHORITY \_\_\_\_\_

CONTINUED FROM:	C45229	DESIGNED BY:	M. MARAIS
CONTINUED ON:	C45231	CHECKED BY:	K. GOVENDER
CROSS SECTION NO:	C41972-C41982	DRAWN BY:	P. RAMAUTAR
PLAN NO:	C41964-C41971	CHECKED BY:	M. SINGH
NAIDU CONSULTING - CONSULTING ENGINEER		K. GOVENDER	
SIGN: _____		DATE: _____	

Designed by:-

Naidu Consulting no.:- D267/4116/D

Department:  
Transport  
Province of KwaZulu-Natal

UPGRADE OF MAIN ROAD P402 ( HOLY FAMILY CONVENT - KWAMGWAGWA)

TRANSPORTATION ENGINEERING : CHIEF ENGINEER

HEAD: TRANSPORT

STAKED KM DISTANCE AS SHOWN

SCALE: HOR 1:2000, VERT 1:200

DESCRIPTION: FROM KM 0+000 TO KM 7+517

PIPE LONGITUDINAL SECTION

SHEET 7 OF 12

PLAN No. C45230

C45230